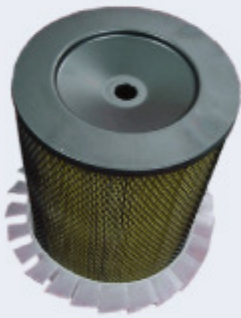




Filtros **Famel** Servicio Pesado

CATALOGO FILTROS 2009 TRANSPORTE CAMIONES - UTILITARIOS



FILTROS DE AIRE



FILTROS DE AIRE
SELLADO RADIAL



FILTROS DE
ACEITE



FILTROS DE
COMBUSTIBLE



FILTROS
HIDRAULICOS



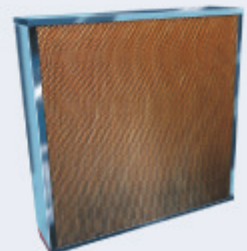
EQUIPOS
PURIFICADORES



CARCAZAS
FILTRANTES DE AIRE



FILTROS DE PAÑO
Separadores Aire Aceite



PANELES
FILTRANTES

FIAT IVECO

Modelo	Motor	Año	Aire Primario Aire Secundario	Aceite	Combustible	Hidráulico
150 E, 160 E			1° FR-962 2° FR-868	F-197	FCS-138	FA-208H (H)
150 N-T-NC			FR-966	F-113N	FCS-15050	FA-208H (H)
160 E 20 N-T			1° FR-962 2° FR-868	F-37	FCS-31	
160 E 23 N-T			1° FR-962 2° FR-868	F-37	FCS-31	
190-29 N-T		94	FR-920	F-37	FCS-31	
190-33 Turbo N		92	FR-920	F-196	FCS-31	
341 A				F-37	FCS-31	
341 A1 319 NA				F-37	FCS-31	
619 N-N1-T1 697 N-T		73		FA-7178	FCS-31	
619 N-N1-T1 697 N-T		73		F-37	FCS-31	FA-277H (H)
673 N-T				F-32 (2)	FC-771 ó FCS-31	
Euro Tech 190 E 31 T	CURSOR E068B1	11/98	FR-920		FTC-17210	FA-208H (H)
Euro Tech 450 E 37 HE Intercooler			FR-920	F-196		FA-208H (H) FTC-17210 (TC)
Euro Tech 450 E 37 HT Turbocooler	IVECO 8210 42 KA 13.8	99	1° FR-920 2° FR-1141	F-196		FA-208H (H) FCS-222 (TC)
Euro Tech cursor 180 E 24			FR-920	FA-699	FTC-17210	
Euro Tech cursor 8 (310 CV) Turbocompresor VGT e i	24V 7.8 diesel		FR-920		FTC-17210	FA-208H (H)
Eurocargo 120 E 15		97	FR-1367	F-197	FCS-138	FA-208H (H) FTC-17210 (TC)

FIAT IVECO

Modelo	Motor	Año	Aire Primario Aire Secundario	Aceite	Combustible	Hidráulico
Eurocargo 120 E 15, 150 E 20 T, 160 E 23 T I, 14		97	1° FR-962 2° FR-868	F-197	FCS-138	FA-208H (H) FTC-17210 (TC)
Eurocargo 150 E 18 T, 160 E 21 Turbocooler	IVECO 8060-25V 5.9, IVECO 8060-45V 5.9	98	1° FR-962 2° FR-868	F-197	FCS-138	FA-208H (H) FCS-222 (TC) FTC-17210 (TC)
Eurocargo 160 E 24			FR-962	F-197	FCS-15050	FA-208H (H) FTC-17210 (TC)
Eurocargo Tector 170 E 22	Turbo diesel intercoole	1/04	1° FR-962 2° FR-968			FA-208H (H) FTC-17210 (TC)
EuroTrakker 190 E38/44, 340 E38, 380 E38/44, 410 E	Cursor 13	01/01				FA-208H (H) FTC-17210 (TC)
EuroTrakker 200 E 41 H, 450 E 41	8210.42 KA 875		FR-920	F-196		FA-208H (H) FTC-17210 (TC)
EuroTrakker 340 E 44	Cursor 13	01/01				FA-208H (H) FTC-17210 (TC)
EuroTrakker 450 E 37 HT Turbocooler	IVECO 8210-42K 13.8	99	FR-920	F-196		FA-208H (H) FCS-222 (TC)
EuroTrakker MP 380 E 370 H		de01/93a05/01	FR-920	F-196		FA-208H (H) FTC-17210 (TC)
Turbo daily 40.8 furgón				F-197	FC-740 ó FC-710	
Turbo daily 49.10			FR-1201 ó FR-861	F-197	FCS-138	
Turbodaily 35.10, 59.12	2.8i dir. Turboalimen.		FR-1201	F-197	FCS-138	FA-208H (H)
Turbodaily 49.12	8140.43	de5/96a8/99	FR-1201	F-197	FCS-138	FA-208H (H)
F 1000 4X4 Diesel F1000 Supercab	4.3		1° FR-1140 2° FR-987	F-160EP	FC-707	FA-208H (H) FTC-17170
F 14000 HD	MWM D 229/6	92	1° FR-1140 2° FR-987	F-160EP	FC-707	FA-208H (H) FTC-17170
F 14000 HD 4X2	MWM 6.10 NA 6.5		1° FR-1140 2° FR-987	F-37	FC-707	FA-208H (H) FTC-17170
F 14000 Turbo postenfriado	CUMM 4 BTAA 3.9	99	1° P11-9423 2° FR-1250	F-164		FA-208H (H)

FORD

Modelo	Motor	Año	Aire Primario Aire Secundario	Aceite	Combustible	Hidráulico
F 14000 Turboalimentado	CUMM 6 BTAA	03	1° P11-9423 2° FR-1250	F-164		FA-208H (H)
F 400	CUMM 4 BT 114	98	1° FR-1140 2° FR-987	F-37	FCS-138	FA-208H (H)
F 4000 Turbo postenfriado	CUMM 6 BTAA 5.9	99	1° FR-1230 2° FR-1231	F-164		FA-208H (H)
F 700- F 7000	Perkins 6-354 T	77	FR-966	F-30	FC-740 ó FC-710	
1011	Ford 110 Dover	de10/81a10/96		F-133	FC-740 (2)	
1013	Ford 130 Dover	de10/81a10/94	FR-1395	F-133	FC-740 (2)	
1015	Ford 150 Dover	de10/82a10/96		F-133	FC-740 (2)	
1111	Ford 110 Dover	de10/81a10/96		F-133	FC-740 (2)	
1113	Ford 130 Dover	de10/81a10/94	FR-1395	F-133	FC-740 (2)	
1115	Ford 150 Dover	de11/81a10/96		F-133	FC-740 (2)	
1115	Ford 360CU Dorset	de10/80a10/81		F-133	FC-740 (2)	
1117	CUMM V504	de10/81a10/82	FR-1395	FA-176 ó XFA-4011 ó F-12008	FCS-15064	FTC- 17064(TC)
1117	Perkins V8-540		FR-1413 ó FR-1395	F-30	FC-777 (2) ó FCS-15050 (2)	
1213	Ford 130 Dover	de10/81a10/94	FR-1395	F-133	FC-740 (2)	
1217	CUMM V504	de10/81a10/82	FR-1395	FA-176 ó XFA-4011 ó F-12008	FCS-15064	FTC- 17064(TC)
1311	Ford 110 Dover	de10/81a10/96		F-133	FC-740 (2)	
1313	Ford 130 Dover	de10/81a10/94	FR-1395	F-133	FC-740 (2)	

FORD CARGO AMERICANO

Modelo	Motor	Año	Aire Primario Aire Secundario	Aceite	Combustible	Hidráulico
1315	Ford 150 Dover	de11/81a10/96		F-133	FC-740 (2)	
1315	Ford 360 CU Dorset	de10/80a10/81		F-133	FC-740 (2)	
1317	CUMM V 504	de10/81a10/82	FR-1395	FA-176 ó XFA-4011 ó F-12008	FCS-15064	FTC-17064 (TC)
1317	Deutz F6L 413 F2	de10/81a10/87	FR-1395	F-160EP	FCS-189 (2) ó FCS-15050 (2)	
1317	Perkins V8-540		FR-1413 ó FR-1395	F-30	FC-777 (2) ó FCS-15050 (2)	
1320	Deutz F6L-413 F2	de10/81a10/87	FR-1395	F-160EP	FCS-189 (2) ó FCS-15050 (2)	
1320	Perkins V8-640		FR-1395	F-30	FC-710 (2) ó FC-777 (2)	
1417	CUMM V 504	de10/81a10/82	FR-1395	FA-176 ó XFA-4011 ó F-12008	FCS-15064	FTC- 17064(TC)
1513	Ford 130 Dover	de10/81a10/94	FR-1395	F-133	FC-740 (2)	
1515	Ford 150 Dover	de11/81a10/96		F-133	FC-740 (2)	
1515	Ford 360 CU Dorset	de10/80a10/81		F-133	FC-740 (2)	
1517	CUMM V 504	de10/81a10/82	FR-1395	FA-176 ó XFA-4011 ó F-12008	FCS-15064	FTC- 17064(TC)
1517	Deutz F6L-413 F2	de10/81a10/87	FR-1395	F-160EP	FCS-189 (2) ó FCS-15050 (2)	
1517	Perkins V8 540		FR-1413 ó FR-1395	F-30	FC-777 (2) ó FCS-15050 (2)	
1520	Deutz F6L-413 F2	de10/81a10/87	FR-1395	F-160EP	FCS-189 (2) ó FCS-15050 (2)	
1520	Perkins V8-640		FR-1395	F-30	FC-710 (2) ó FC-777 (2)	
1613	Ford 130Dover	de10/81a10/94	FR-1395	F-133	FC-740 (2)	

FORD CARGO AMERICANO

Modelo	Motor	Año	Aire Primario Aire Secundario	Aceite	Combustible	Hidráulico
1615	Ford 150 Dover	de11/81a10/96		F-133	FC-740 (2)	
1617	CUMM V 504	de10/81a10/82	FR-1395	FA-176 ó XFA-4011 ó F-12008	FCS-15064	FTC- 17064(TC)
1617	Deutz F6L-413 F2	de10/81a10/87	FR-1395	F-160EP	FCS-189 (2) ó FCS-15050 (2)	
1617	Perkins V8-540		FR-1413 ó FR-1395	F-30	FC-777 (2) ó FCS-15050 (2)	
1620	Deutz F6L-413 F2	de10/81a10/87	FR-1395	F-160EP	FCS-189 (2) ó FCS-15050 (2)	
1620	Perkins V8-640		FR-1395	F-30	FC-710 (2) ó FC-777 (2)	
1624	CUMM L10	de10/85a10/86	FR-907	1° F-12081 2° F-12048	FCS-15064 (2)	
1713	Ford 130 Dover	de10/81a10/94	FR-1395	F-133	FC-740 (2)	
1720	Deutz F6L-413 F2	de10/81a10/87	FR-1395	F-160EP	FCS-189 (2) ó FCS-15050 (2)	
1720	Perrkins V8-640		FR-1395	F-30	FC-710 (2)	
1724	CUMM L10	de10/85a10/86	FR-907	1° F-12081 2° F-12048	FCS-15064 (2)	
1913	Ford 130 Dover	de10/81a10/94	FR-1395	F-133	FC-740 (2)	
2015	Ford 150 Dover	de11/81a10/96		F-133	FC-740 (2)	
2115	Ford 150 Dover	de11/81a10/96		F-133	FC-740 (2)	
2115	Ford 360 CU Dorset	de10/80a10/81		F-133	FC-740 (2)	
2417	CUMM V 504	de10/81a10/82	FR-1395	FA-176 ó XFA-4011 ó F-12008	FCS-15064	FTC- 17064(TC)
2420	Deutz F6L-413 F2	de10/81a10/87	FR-1395	F-160EP	FCS-189 (2) ó FCS-15050	

FORD CARGO AMERICANO

Modelo	Motor	Año	Aire Primario Aire Secundario	Aceite	Combustible	Hidráulico
2420	Perkins V8-640		FR-1395	F-30	FC-710 (2) ó FC-777 (2)	
2424	CUMM L10	de10/85a10/86	FR-907	1° F-12081 2° F-12048	FCS-15064 (2)	
2517	CUMM V 504	de10/81a10/82	FR-1395	FA-176 ó XFA-4011 ó F-12008	FCS-15064	FTC- 17064(TC)
2517	Perkins V8-540		FR-1413 ó FR-1395	F-30	FC-777 (2) ó FCS-15050 (2)	
2817	CUMM V504	de10/81a10/82	FR-1395	FA-176 ó XFA-4011 ó F-12008	FCS-15064	FTC- 17064(TC)
2817	Perkins V8-540		FR-1413 ó FR-1395	F-30	FC-777 (2) ó FCS-15050 (2)	
2820	Deutz F6L-413 F2	de10/81a10/87	FR-1395	F-160EP	FCS-189 (2) ó FCS-15050 (2)	
2820	Perkins V8-640		FR-1395	F-30	FC-710 (2) ó FC-777 (2)	
3024	CUMM L10	de10/85a10/86	FR-907	1° F-12081 2° F-12048	FCS-15064 (2)	
3220	Deutz F6L-413 F2	de10/81a10/87	FR-1395	F-160EP	FCS-189 (2) ó FCS-15050 (2)	
3220	Perkins V8-640		FR-1395	F-30	FC-710 (2) ó FC-777 (2)	
3224	CUMM L10	de10/85a10/86	FR-907	1° F-12081 2° F-12048	FCS-15064 (2)	
3824	CUMM L10	de10/85a10/86	FR-907	1° F-12081 2° F-12048	FCS-15064	
608	Ford 254 CU	de10/81a10/82		F-133	FC-740 (2)	
609	Ford 90 Dover	de10/81a10/96		F-133	FC-740 (2)	
7000	Ford FD1060 de 5.9 lt.	de10/91a10/92	1° FSR-8000 2° FSR-8022	F-164	FCS-162	
7000	Ford FD1060 de 5.9 lt.	de11/92a10/93	1° FSR-8000 2° FSR-8022	F-164	FCS-162	

FORD CARGO AMERICANO

Modelo	Motor	Año	Aire Primario Aire Secundario	Aceite	Combustible	Hidráulico
708	Ford 90 Dover	de10/81a10/96		F-133	FC-740 (2)	
709	Ford 90 Dover	de10/81a10/96		F-133	FC-740 (2)	
711	Ford 110 Dover	de10/81a10/96		F-133	FC-740 (2)	
712	Ford 380 CU	de10/81a10/82		F-133	FC-740 (2)	
8000	Ford FD1460 de 8.3 lt.	de11/92a10/93		F-230	FCS-162	
808	Ford 254 CU	de10/81a10/82		F-133	FC-740 (2)	
809	Ford 90 Dover	de10/81a10/96		F-133	FC-740 (2)	
811	Ford 110 Dover	de10/81a10/96		F-133	FC-740 (2)	
812	Ford 380 CU	de10/81a10/82		F-133	FC-740 (2)	
911	Ford 110 Dover	de10/81a10/96		F-133	FC-740 (2)	
912	Ford 380 CU	de10/81a10/82		F-133	FC-740 (2)	
915	Ford 150 Dover	de10/81a10/96		F-133	FC-740 (2)	
California	TCA 7.8 lt.	06/86			FCS-15050 FCS-15030	FA-208H (H)
Federal	TCP 7.8 lt.	09/85			FCS-15050 FCS-15030	FA-208H (H)
O 713	Ford 130 Dover	de10/81a10/94	FR-1395	F-133	FC-740 (2)	
O 813	Ford 130 Dover	de10/81a10/94	FR-1395	F-133	FC-740 (2)	
O 913	Ford 130 Dover	de10/81a10/94	FR-1395	F-133	FC-740 (2)	

FORD CARGO AMERICANO

Modelo	Motor	Año	Aire Primario Aire Secundario	Aceite	Combustible	Hidráulico
O 915	Ford 360 CU Dorset	de10/81a10/82		F-133	FC-740 (2)	
1030	CUMM 6CT 8.3	11/91	1° FR-1203 2° FR-1233	F-230	FCS-15050 FCS-15030	FA-208H (H) FTC-17084 (TC)
1113	MWM D229/6	10/86	1° FR-1230 2° P10-8674	F-160EP	FC-707 (2)	FA-208H (H)
1114	Ford FTO 6.6	11/86	1° FR-1230 2° FR-1231	F-45	FCS-15050 (2)	FA-208H (H) FTC-17171 (TC)
1114	Ford FTO 6.6	10/86	1° FR-1230 2° P10-8674		FCS-15050 (2)	FA-208H (H) FTC-17171 (TC)
1117	Ford FTO 6.6	10/86	1° FR-1230 2° P10-8674		FCS-15050 (2)	FA-208H (H) FTC-17171 (TC)
1117	Ford FTO 6.6 Turbo	10/86	1° FR-1230 2° FR-1231		FCS-15050 (2)	FA-208H (H) FTC-17171 (TC)
1212	Ford FTO 6.6 Turbo	10/86	1° FR-1230 2° FR-1231		FCS-15050 (2)	FA-208H (H) FTC-17171 (TC)
1215	CUMM 6BT 5.9 lt.	de04/92a01/99	1° FR-1230 2° FR-1231	F-164	FCS-15050 FCS-15030	FA-208H (H) FTC-17084 (TC)
1215	Ford FTO 6.6 Aspirado	11/86	1° FR-1230 2° P10-8674	F-45	FCS-15050 (2)	FA-208H (H) FTC-17171 (TC)
1215	Ford FTO 6.6 Aspirado	de12/86a10/93	1° FR-1230 2° FR-1231	F-45	FCS-15050 (2)	FA-208H (H) FTC-17171 (TC)
1216 C	CUMM 6BT5.9 lt	05/93		F-164		
1217	CUMM 6 BT 5.9 lt.	10/01		F-164	FCS-15050 (2)	FA-208H (H)
1217	CUMM 6BT 5.9 lt.	de10/99a10/01	1° FR-1230 2° FR-1231	F-164	FCS-15050 FCS-15030	FA-208H (H) FTC-17084 (TC)
1217 C	CUMM B 5.9 lt. T.diesel	01/01	1° FR-1230 2° FR-1231	F-164	FCS-15050 FCS-15030	FA-208H (H) FTC-17084 (TC)
1218	Ford FTO 6.6 Aspirado	12/86	1° FR-1230 2° FR-1231	F-195	FCS-15050 (2)	FA-208H (H) FTC-17171 (TC)
1218	Ford FTO 6.6 Aspirado	11/86	1° FR-1230 2° P10-8674		FCS-15050 (2)	FA-208H (H) FTC-17171 (TC)

FORD CARGO BRASIL

Modelo	Motor	Año	Aire Primario Aire Secundario	Aceite	Combustible	Hidráulico
1313	MWM D229/6	10/86	1° FR-1230 2° P10-8674	F-160EP	FC-707 (2)	FA-208H (H)
1314	Ford FTO 6.6 Aspirado	12/86	1° FR-1230 2° FR-1231	F-45	FCS-15050 (2)	FA-208H (H) FTC-17171 (TC)
1314	Ford FTO 6.6 Aspirado	11/86	1° FR-1230 2° P10-8674		FCS-15050 (2)	FA-208H (H) FTC-17171 (TC)
1317	Ford FTO 6.6	10/86	1° FR-1230 2° P10-8674		FCS-15050 (2)	FA-208H (H) FTC-17171 (TC)
1317	Ford FTO 6.6 Turbo	10/86	1° FR-1230 2° FR-1231		FCS-15050 (2)	FA-208H (H) FTC-17171 (TC)
1415	CUMM 6 BT 5.9 lt.	de04/92a01/99	1° FR-1230 2° FR-1231	F-164	FCS-15050 FCS-15030	FA-208H (H) FTC-17084 (TC)
1415	CUMM 6BT 5.9 lt.	de09/02a11/02	1° FR-1230 2° P10-8674	F-164	FCS-15050 FCS-15030	FA-208H (H) FTC-17084 (TC)
1415	Ford FTO 6.6 Aspirado	12/86	1° FR-1230 2° FR-1231	F-45	FCS-15050 (2)	FA-208H (H) FTC-17171 (TC)
1415	Ford FTO 6.6 Aspirado	11/86	1° FR-1230 2° P10-8674		FCS-15050 (2)	FA-208H (H) FTC-17171 (TC)
1416 C	CUMM 6BT 5.9lt.	05/93		F-164		
1417	CUMM 6BT 5.9lt.	de10/99a10/01	1° FR-1230 2° FR-1231	F-164	FCS-15050 FCS-15030	FA-208H (H) FTC-17084 (TC)
1417	CUMM 6BT 5.9lt.	10/01		F-164	FCS-15050 FCS-15030	FA-208H (H)
1417	CUMM B 5.9 lt. Turbo diesel	de09/02a11/02	1° FSR-8112 2° FSR-8119	F-164	FCS-15050 FCS-15030	FA-208H (H)
1418	Ford FTO 6.6 Turbo	12/86	1° FR-1230 2° FR-1231	F-45	FCS-15050 (2)	FA-208H (H) FTC-17171 (TC)
1418	Ford FTO 6.6 Turbo	11/86	1° FR-1230 2° P10-8674		FCS-15050 (2)	FA-208H (H) FTC-17171 (TC)
1419	Ford FTO 6.6 Turbo	11/89	1° FR-1230 2° FR-1231	F-45	FCS-15050 (2)	FA-208H (H) FTC-17171 (TC)
1419	Ford FTO 6.6 Turbo	11/86	1° FR-1230 2° P10-8674		FCS-15050 (2)	FA-208H (H) FTC-17171 (TC)

FORD CARGO BRASIL

Modelo	Motor	Año	Aire Primario Aire Secundario	Aceite	Combustible	Hidráulico
1419	Ford FTO 6.6 Turbo	de12/86a10/89	1° FR-1230 2° FR-1231	F-45	FCS-15050 (2)	FA-208H (H) FTC-17171 (TC)
1421	CUMM 6BT 5.9 lt.	10/02		F-164	FCS-15050 FCS-15030	FA-208H (H)
1421	CUMM 6BT 5.9 lt.	de10/99a10/01	1° FR-1230 2° FR-1231	F-164	FCS-15050 FCS-15030	FA-208H (H) FTC-17084 (TC)
1422	CUMM 6CT 8.3 lt.	01/99	1° FR-1203 2° FR-1233	F-230	FCS-15050 FCS-15030	FA-208H (H) FTC-17084 (TC)
1422 (6X4)	CUMM 6CT 8.3lt.	01/92	1° FR-1203 2° FR-1233	F-230	FCS-15050 FCS-15030	FA-208H (H) FTC-17084 (TC)
1513	MWM D229/6	10/86	1° FR-1230 2° P10-8674	F-160EP	FC-707 (2)	FA-208H (H)
1514	Ford FTO 6.6	11/86	1° FR-1230 2° P10-8674		FCS-15050 (2)	FA-208H (H) FTC-17171 (TC)
1514	Ford FTO 6.6	12/86	1° FR-1230 2° FR-1231	F-45	FCS-15050 (2)	FA-208H (H) FTC-17171 (TC)
1517	Ford FTO 6.6	10/86	1° FR-1230 2° P10-8674		FCS-15050 (2)	FA-208H (H) FTC-17171 (TC)
1518	Motor Ford FTO 6.6 Turbo	10/86	1° FR-1230 2° FR-1231		FCS-15050 (2)	FA-208H (H) FTC-17171 (TC)
1521	CUMM 6BTAA B 5.9 lt.			F-164	FCS-15050 FCS-15030	FA-208H (H) FTC-17084 (TC)
1615	Ford FTO 6.6 aspirado	de12/86a10/92	1° FR-1230 2° FR-1231	F-45	FCS-15050 (2)	FA-208H (H) FTC-17171 (TC)
1615	Ford FTO 6.6 aspirado	11/86	1° FR-1230 2° P10-8674		FCS-15050 (2)	FA-208H (H) FTC-17171 (TC)
1617	CUMM 6B	10/92	1° FR-1230 2° FR-1231	F-164	FCS-15050 FCS-15030	FA-208H (H) FTC-17084 (TC)
1617	CUMM 6BT 5.9 lt.	de10/99a10/01	1° FR-1230 2° FR-1231	F-164	FCS-15050 FCS-15030	FA-208H (H) FTC-17084 (TC)
1617	CUMM 6BT 5.9 lt.	10/01		F-164	FCS-15050 FCS-15030	FA-208H (H) FTC-17084 (TC)
1617	CUMM 6CT 8.3 lt.	10/91	1° FR-1203 2° FR-1233	F-230	FCS-15050 FCS-15030	FA-208H (H) FTC-17084 (TC)

FORD CARGO BRASIL

Modelo	Motor	Año	Aire Primario Aire Secundario	Aceite	Combustible	Hidráulico
1618	Ford FTO 6.6 Turbo	12/86	1° FR-1230 2° FR-1231	F-45	FCS-15050 (2)	FA-208H (H) FTC-17171 (TC)
1618	Ford FTO 6.6 Turbo	11/86	1° FR-1230 2° P10-8674		FCS-15050 (2)	FA-208H (H) FTC-17171 (TC)
1619	Ford FTO 6.6 Turbo	12/86	1° FR-1230 2° FR-1231	F-45	FCS-15050 (2)	FA-208H (H) FTC-17171 (TC)
1619	Ford FTO 6.6 Turbo	de10/89a11/86	1° FR-1230 2° P10-8674		FCS-15050 (2)	FA-208H (H) FTC-17171 (TC)
1621	CUMM 6BT 5.9 lt.	de10/99a10/01	1° FR-1230 2° FR-1231	F-164	FCS-15050 FCS-15030	FA-208H (H) FTC-17084 (TC)
1621	CUMM 6BT 5.9 lt.	10/01		F-164	FCS-15050 FCS-15030	FA-208H (H) FTC-17084 (TC)
1622	CUMM 6CT 8.3 lt.	10/91	1° FR-1203 2° FR-1233	F-230	FCS-15050 FCS-15030	FA-208H (H) FTC-17084 (TC)
1622	CUMM 6CTAA 8.3 lt.	10/02	1° FSR-8112 2° FSR-8119		FCS-15050 FCS-15030	FA-208H (H) FTC-17084 (TC)
1622 (6X4)	CUMM 6CT 8.3 lt.	01/92	1° FR-1203 2° FR-1233	F-230	FCS-15050 FCS-15030	FA-208H (H) FTC-17084 (TC)
1630	CUMM 6CT 8.3 lt.	10/01	1° FSR-8112 2° FSR-8119			FA-208H (H)
1717	CUMM 6BTAAB 5.9 lt.	10/01		F-164	FCS-15050 FCS-15030	FA-208H (H) FTC-17084 (TC)
1721	CUMM 6BTAAB 5.9 lt.	10/01		F-164	FCS-15050 FCS-15030	FA-208H (H) FTC-17084 (TC)
1721	CUMM B 5.9 lt. Turbo diesel	01/02			FCS-15050 FCS-15030	FA-208H (H) FTC-17084 (TC)
1722	CUMM C8.3 lt.	01/01	1° FSR-8112 2° FSR-8119	F-230	FCS-15050 FCS-15030	FA-208H FTC-17084
1731	CUMM 6 CT 8.3 lt.	01/01	1° FSR-8112 2° FSR-8119			FA-208H (H)
2218	Ford FTO 6.6 Turbo	de10/89a11/86	1° FR-1230 2° P10-8674		FCS-15050 (2)	FA-208H (H) FTC-17171 (TC)
2218	Ford FTO 6.6 Turbo	12/86	1° FR-1230 2° FR-1231	F-45	FCS-15050 (2)	FA-208H (H) FTC-17171 (TC)

FORD CARGO BRASIL

Modelo	Motor	Año	Aire Primario Aire Secundario	Aceite	Combustible	Hidráulico
2319	Ford FTO 6.6 Turbo	de10/89a11/86	1° FR-1230 2° P10-8674		FCS-15050 (2)	FA-208H (H) FTC-17171 (TC)
2319	Ford FTO 6.6 Turbo	12/86	1° FR-1230 2° FR-1231	F-45	FCS-15050 (2)	FA-208H (H) FTC-17171 (TC)
2322	CUMM 6CT 8.3 lt.	10/91	1° FR-1203 2° FR-1233	F-230	FCS-15050 FCS-15030	FA-208H (H) FTC-17084 (TC)
2322 (6X4)	CUMM 6CT 8.3 lt.	01/92	1° FR-1203 2° FR-1233	F-230	FCS-15050 FCS-15030	FA-208H (H) FTC-17084 (TC)
2421	CUMM 6CTAA 5.9 lt.	10/01	1° FSR-8112 2° FSR-8119		FCS-15050 (2)	FA-208H (H)
2422	CUMM 6CT 8.3 lt.	10/91	1° FR-1203 2° FR-1233	F-230	FCS-15050 FCS-15030	FA-208H (H) FTC-17084 (TC)
2422	CUMM 6CTAAC 8.3 lt.	10/00	1° FSR-8112 2° FSR-8119	F-230	FCS-15050 (2)	FA-208H (H)
2422 (6X4)	CUMM 6CT 8.3 lt.	01/92	1° FR-1203 2° FR-1233	F-230	FCS-15050 FCS-15030	FA-208H (H) FTC-17084 (TC)
2425	CUMM 6CT 8.3 lt.	10/91	1° FR-1203 2° FR-1233	F-230	FCS-15050 FCS-15030	FA-208H (H) FTC-17084 (TC)
2622	CUMM 6CT 8.3 lt.	10/01	1° FSR-8112 2° FSR-8119			
2626	CUMM 6CT 8.3 lt.	10/01	1° FSR-8112 2° FSR-8119			
2630	CUMM 6CT 8.3 lt.	de10/91a10/00	1° FR-1203 2° FR-1233	F-230	FCS-15050 FCS-15030	FA-208H (H) FTC-17084 (TC)
2631	CUMM 6CT 8.3 lt.	10/01	1° FSR-8112 2° FSR-8119			
3224	Ford 7.8 Intercooler	10/88	1° FR-1203 2° FR-1233		FCS-15050 (2)	FA-208H (H)
3322	CUMM 6CTAAC 8.3 lt.	10/01	1° FSR-8112 2° FSR-8119	F-230	FCS-15050 FCS-15030	FA-208H (H) FTC-17084 (TC)
3530	CUMM 6CTAA 8.3 lt. Turbo	01/92	1° FR-1203 2° FR-1233	F-230	FCS-15050 FCS-15030	FA-208H (H) FTC-17084 (TC)
3530	CUMM 6CT 8.3 lt.	01/99	1° FR-1203 2° FR-1233	F-230	FCS-15050 FCS-15030	FA-208H (H) FTC-17084 (TC)

FORD CARGO BRASIL

Modelo	Motor	Año	Aire Primario Aire Secundario	Aceite	Combustible	Hidráulico
3660	CUMM 6CTAA 8.3 lt. Turbo			F-230	FCS-15050 FCS-15030	FA-208H (H) FTC-17084 (TC)
4030	CUMM 6CT 8.3 lt.	10/91	1° FR-1203 2° FR-1233	F-230	FCS-15050 FCS-15030	FA-208H (H)
4030	CUMM 6CT 8.3 lt.	10/98	1° FR-1203 2° FR-1233	F-230	FCS-15050 FCS-15030	FA-208H (H) FTC-17084 (TC)
4031	CUMM 6CTAA 8.3 lt.	10/01	1° FSR-8112 2° FSR-8119		FCS-15050 FCS-15030	FA-208H (H)
4331	CUMM 6CT 8.3 lt.	10/01	1° FSR-8112 2° FSR-8119			
814	CUMM 4BT 3.9 lt.	10/95	1° FR-1140 2° FR-987	F-163		
815	CUMM 3.9 lt. (Euro II)	10/99	1° FR-1140 2° FR-987	F-164	FCS-15050 FCS-15030	FA-208H (H)
815 VUC	CUMM 3.9 lt. (Euro II)	10/99	1° FR-1140 2° FR-987	F-164	FCS-15050 FCS-15030	FA-208H (H)
1011	110/6 AA Dover	de01/82a01/96	FR-1395		FC-710 (2)	
1011	6AA/365 CID	de05/81a01/82	FR-1395		FC-710 (2)	
1012	7 AA/380 CID	de05/81a01/82	FR-1395	F-133	FC-710 (2)	
1013	130/7 AA Dover	de01/82a06/94	FR-1395		FC-710 (2)	
1014	6 CA/363 CID	de05/81a01/82	FR-1395	F-133	FC-710 (2)	
1015	150/6 AA Dover	de12/84a06/94	FR-1395		FC-710 (2)	
1111	110/6 AA Dover	de01/82a06/94	FR-1395		FC-710 (2)	
1111	6AA/365 CID	de05/81a01/82	FR-1395		FC-710 (2)	
1112	7AA/380 CID	de05/81a01/82	FR-1395	F-133	FC-710 (2)	

FORD CARGO EUROPEO

Modelo	Motor	Año	Aire Primario Aire Secundario	Aceite	Combustible	Hidráulico
1113	130/7 AA Dover	de01/82a06/94	FR-1395		FC-710 (2)	
1113	MWM D229/6	de06/85a06/86	FR-1395		FC-710 (2)	
1114	6CA/363 CID	de05/81a01/82	FR-1395	F-133	FC-710 (2)	
1114	NA 6.6	de07/84a06/86	FR-1395		FC-710 (2)	
1115	150/6 AA Dover	de01/82a06/94	FR-1395			
1115	6CA/363 CID	de05/81a01/82	FR-1395			
1117	TC 6.6	de11/84a06/86	FR-1395			
1211	110/6 AA Dover	de01/82a06/94	FR-1395		FC-710 (2)	
1211	6 AA/365 CID	05/81a 01/82	FR-1395		FC-710 (2)	
1211 K	6AA/365 CID	de05/81a01/82	FR-1395		FC-710 (2)	
1212	7 AA/380 CID	de05/81a01/82	FR-1395	F-133	FC-710 (2)	
1212 K	7AA/380 CID	de05/81a01/82	FR-1395	F-133	FC-710 (2)	
1213	130/7 AA Dover	de01/82a06/94	FR-1395		FC-710 (2)	
1214	6CA/363 CID	de05/81a01/82	FR-1395	F-133	FC-710 (2)	
1214 K	6CA/363 CID	de05/81a01/82	FR-1395	F-133	FC-710 (2)	
1215	150/6 CA Dover	de12/84a06/94	FR-1395			
1215	NA 6.6	07/86	FR-1395			

FORD CARGO EUROPEO

Modelo	Motor	Año	Aire Primario Aire Secundario	Aceite	Combustible	Hidráulico
1218	TC 6.6	07/86			FCS-15050 (2)	
1311	110/6 AA Dover	de01/82a06/94	FR-1395		FC-710 (2)	
1311	6AA/365 CID	de05/81a01/82	FR-1395		FC-710 (2)	
1311 K	6AA/365 CID	de05/81a01/82	FR-1395		FC-710 (2)	
1312	7 AA/380 CID	de05/81a01/82	FR-1395	F-133	FC-710 (2)	
1312 K	7AA/380 CID	de05/81a01/82	FR-1395	F-133	FC-710 (2)	
1313	130/7 AA Dover	de01/82a06/94	FR-1395		FC-710 (2)	
1313	MWM D229/6	de06/85a06/86	FR-1395		FC-710 (2)	
1313	MWM D229/6	de06/85a06/86	FR-1395		FC-710 (2)	
1314	6CA/363 CID	de05/81a01/82	FR-1395	F-133	FC-710 (2)	
1314	NA 6.6	de07/84a06/86	FR-1395		FC-710 (2)	
1314 K	6CA/363 CID	de05/81a01/82	FR-1395	F-133	FC-710 (2)	
1315	150/6 CA Dover	de12/84a06/94	FR-1395			
1315	6CA/363 CID	de05/81a01/82	FR-1395			
1315 K	6 CA/363 CID	de05/81a01/82	FR-1395			
1317	Deutz KHD F6L-413F	08/82	FR-1395		FCS-189	
1317	TC 6.6	de11/84a06/86			FCS-15050 (2)	

FORD CARGO EUROPEO

Modelo	Motor	Año	Aire Primario Aire Secundario	Aceite	Combustible	Hidráulico
1320	Deutz KHA F6L-413FZ	08/82	FR-1395		FCS-189	
1412	7AA/380 CID	de05/81a01/82	FR-1395	F-133	FC-710 (2)	
1412 K	7AA/380 CID	de05/81a01/82	FR-1395	F-133	FC-710 (2)	
1413	130/7 AA Dover	de01/82a06/94	FR-1395		FC-710 (2)	
1414	6CA/363 CID	de05/81a01/82	FR-1395		FC-710 (2)	
1414 K	6CA/363 CID	de05/81a01/82	FR-1395		FC-710 (2)	
1415	150/6 CA Dover	de12/84a06/94	FR-1395			
1415	NA 6.6	07/86	fr-1395			
1418	TC 6.6	07/86			FCS-15050 (2)	
1419	Ford FTO TC 6.6	10/90			FCS-15050 (2)	
1512	7AA/380 CID	de05/81a01/82	FR-1395	F-133	FC-710 (2)	
1512 K	7AA/380 CID	de05/81a01/82	FR-1395	F-133	FC-710 (2)	
1513	130/7 AA Dover	de01/82a06/94	FR-1395		FC-710 (2)	
1514	6CA/363 CID	de05/81a01/82	FR-1395	F-133	FC-710 (2)	
1514	NA 6.6	de07/84a06/86	FR-1395		FC-710 (2)	
1515	150/6 CA Dover	de01/82a06/94	FR-1395			
1515	6CA/363 CID	de05/81a01/82	FR-1395			

FORD CARGO EUROPEO

Modelo	Motor	Año	Aire Primario Aire Secundario	Aceite	Combustible	Hidráulico
1515 K	6CA/363 CID	de05/81a01/82	FR-1395			
1517	Deutz KHD F6L-413F	08/82	FR-1395		FCS-189	
1517	TC 6.6	de11/84a06/86			FCS-15050 (2)	
1613	130/7 AA Dover	de12/84a11/87	FR-1395		FC-710 (2)	
1614	6CA/363 CID	de05/81a01/82	FR-1395		FC-710 (2)	
1615	150/6 CA Dover	de12/84a11/87	FR-1395			
1615	NA 6.6	07/86	FR-1395			
1617	Deutz KHD F6L-413F	de04/82a11/87	FR-1395		FCS-189	
1617	Ford FTO NA 7.8	10/91			FCS-15050 (2)	
1618	Ford FTO TC 6.6	07/86			FCS-15050 (2)	
1618	MWM 6.10	04/93			FCS-15050 (2)	
1619	Ford FTO TC 6.6	10/90			FCS-15050 (2)	
1620	Deutz KHD F6L-413 FZ	de04/82a11/87	FR-1395		FCS-189	
1622	Ford FTO TC 7.8	10/91			FCS-15050 (2)	
1624	CUMM L10-243	de08/85a11/87	FR-907	F-12048		
1712	7AA/380 CID	de05/81a01/82	FR-1395	F-133	FC-710 (2)	
1713	130/7 AA Dover	de01/82a06/94	FR-1395		FC-710 (2)	

FORD CARGO EUROPEO

Modelo	Motor	Año	Aire Primario Aire Secundario	Aceite	Combustible	Hidráulico
1912	7AA/380 CID	de05/81a01/82	FR-1395	F-133	FC-710 (2)	
1913	130/7 AA Dover	de01/82a06/94	FR-1395		FC-710 (2)	
1928	CUMM LTA 10-290	de09/86a06/94	FR-1395			
2014	6CA/363 CID	de05/81a01/82	FR-1395	F-133	FC-710 (2)	
2015 S	150/6 CA Dover	de12/84a06/94	FR-1395			
2114	6CA/363 CID	de05/81a01/82	FR-1395	F-133	FC-710 (2)	
2115	150/6 CA Dover	de01/82a06/94	FR-1395			
2115	6CA/363 CID	de05/81a01/82	FR-1395			
2215	Ford FTO NA 6.6	07/86	FR-1395			
2218	TC 6.6	07/86			FCS-15050 (2)	
2218 T	Ford FTO TC 6.6	07/89			FCS-15050 (2)	
2219	Ford FTO TC 6.6	11/91			FCS-15050 (2)	
2220	Deutz KHD F6L-413 FZ	de10/82a03/84	FR-1395		FCS-189	
2224	Ford FTO ATA 7.8	10/92			FCS-15050 (2)	
2319	Ford FTO TC 6.6	10/90			FCS-15050 (2)	
2322	Ford FTO TC 7.8	10/91			FCS-15050 (2)	
2420	Deutz KHD F6L-413 FZ	10/82	FR-1395		FCS-189	

FORD CARGO EUROPEO

Modelo	Motor	Año	Aire Primario Aire Secundario	Aceite	Combustible	Hidráulico
2422	Ford FTO TC 7.8	10/91			FCS-15050 (2)	
2820 S	Deutz KHD F6L-413 FZ	de12/84a08/87	FR-1395		FCS-189	
3020	Deutz KHD F6L-413 FZ	04/82	FR-1395		FCS-189	
3020	Deutz KHD F6L-413 FZ	de04/82a08/87	FR-1395		FCS-189	
3214	Ford FTO ATA 7.8	10/92	FR-1395		FCS-15050 (2)	
3224 ATAC	Ford FTO TC 7.8	10/89			FCS-15050 (2)	
3530	Ford FTO TC 7.8	04/91			FCS-15050 (2)	
3824	CUMM L 10-243	02/86	FR-907	F-12048		
4028	CUMM LTA 10-290	02/86	FR-907	F-12048		
C 1215	CUMM 6BT	05/93	FR-1395	F-164	FCS-15050 (2)	
C 1216	CUMM 6BT	05/93	FR-1395	F-164	FCS-15050	
C 1415	CUMM 6BT	05/93	FR-1395	F-164	FCS-15050 (2)	
C 1416	CUMM 6BT	05/93	FR-1395	F-164	FCS-15050	
C 1422	CUMM 6CT	10/02	FR-1395		FCS-15050 (2)	
C 1617	CUMM 6CNA	05/93	FR-1395		FCS-15050 (2)	
C 1622	CUMM 6CT	10/92	FR-1395		FCS-15050 (2)	
C 2322	CUMM 6 CT	10/92	FR-1395		FCS-15050 (2)	

FORD CARGO EUROPEO

Modelo	Motor	Año	Aire Primario Aire Secundario	Aceite	Combustible	Hidráulico
C 2422	CUMM 6CT	10/92	FR-1395		FCS-15050 (2)	
C 3224	CUMM 6CTAA	04/92	FR-1395		FCS-15050 (2)	
C 3530	CUMM 6CTAA	11/91	FR-1395		FCS-15050 (2)	
C 814	CUMM 4BTAA	06/96		F-164	FCS-162 (2)	
O 608	5AA/254CD	de05/81a01/82		F-133	FC-710 (2)	
O 609	90/5 AA Dover	de01/82a01/96			FC-710 (2)	
O 708	5AA/254 CID	de05/81a01/82		F-133	FC-710 (2)	
O 709	90/5 AA Dover	de01/82a01/96			FC-710 (2)	
O 711	110/6 AA Dover	de01/82a01/96	FR-1395		FC-710 (2)	
O 711	6AA/365 CID	de05/81a01/82	FR-1395		FC-710 (2)	
O 712	7AA/380 CID	de05/81a01/82	FR-1395	F-133	FC-710 (2)	
O 713	130/7 AA Dover	de01/82a01/87	FR-1395		FC-710 (2)	
O 8/14	6CA/363 CID	de05/81a01/82	FR-1395	F-133	FC-710 (2)	
O 808	5AA/254 CID	de05/81a01/82		F-133	FC-710 (2)	
O 808 K	5AA/254 CID	de05/81a01/82		F-133	FC-710 (2)	
O 809	90/5 AA Dover	de01/82a01/96			FC-710 (2)	
O 809 K	90/5 AA Dover	de01/82a01/96			FC-710 (2)	

FORD CARGO EUROPEO

Modelo	Motor	Año	Aire Primario Aire Secundario	Aceite	Combustible	Hidráulico
O 811	110/6 AA Dover	de01/82a01/96	FR-1395		FC-710 (2)	
O 811	6AA/365 CID	de05/81a01/82	FR-1395		FC-710 (2)	
O 812	7 AA/380 CID	de05/81a01/82	FR-1395	F-133	FC-710 (2)	
O 812 K	7 AA/380 CID	de05/81a01/82	FR-1395	F-133	FC-710 (2)	
O 813	130/7 AA Dover	de01/82a01/96	FR-1395		FC-710 (2)	
O 813 K	130/7 AA Dover	de01/82a01/96	FR-1395		FC-710 (2)	
O 911	110/6 AA Dover	de01/82a01/96	FR-1395		FC-710 (2)	
O 911	6AA/365 CID	de05/81a01/82	FR-1395		FC-710 (2)	
O 912	AA/380 CID	de05/81a01/82	FR-1395	F-133	FC-710 (2)	
O 913	130/7 AA Dover	de01/82a01/96	FR-1395		FC-710 (2)	
O 915	6CA/363 CID	de05/81a01/82	FR-1395		FC-710 (2)	
14-190	CAT 3116 Turbo Intercooler 6.6 lt.		1° FSR-8000 2° FSR-8022 (papel) ó 2° FSR-8118 (paño)	F-12040		
15-190	CAT 3116 Turbo Intercooler 6.6 lt.		1° FSR-8000 2° FSR-8022 (papel) ó 2° FSR-8118 (paño)	F-12040		
16-220	CAT 3116 Turbo Intercooler 6.6 lt.		1° FSR-8000 2° FSR-8022 (papel) ó 2° FSR-8118 (paño)	F-12040		
6-100, 6-150 Turbo diesel	4.2 MWM 6.07 THD		FSR-8041	F-160EP	FCS-138	
6-150 Turbo diesel	4.2 MWM 18V	98	FR-861	F-160EP	FCS-138	
NPR	4.3 Isuzu 4HF 1		FR-1217	F-12003	FCS-54	

GM (Pick up y camiones)

Modelo	Motor	Año	Aire Primario Aire Secundario	Aceite	Combustible	Hidráulico
S 10 STD, DLX Turbodiesel Intercooler	MWM Sprint 2.8	00	FSR-8041	F-193		
S 10, STD, DLX Turbodiesel Intercooler	2.8 MWM Sprint 4.07 TCA	02	FSR-8041	F-193		
Silverado STD/DLX Turbodiesel	4.2 MWM Sprint 6.07		1° FSR-8051 2° FSR-8052	F-160EP	FCS-138	
1306 TAG	Perkins		FR-907			
2050	IHC DT-466				FCS-42	
4700	7.6 Navistar DT-466E	95	P12-9545		FCS-207	
4900 6x4 7.6 NavisTar DTA-466			P12-9545		FCS-207	
8100	7.6 Navistar DT-530 E		P12-9545			
9400	CUMM NT-855			F-230		
DT-466, DTA-466			P12-9545		FCS-207	
DTA-360, DT-360			P12-9545			
Peregrine	Perkins		FR-907			
1114	OM 1214		FR-1348	FA-7152	FC-707	
1114 (LK 675)	OM 356.904	02/92	FR-1217	FA-691	FC-707	FA-208H (H)
1114 (LK 675)	OM 366.907/14	de03/84a02/93	FR-1217	FA-691	FC-707	FA-208H (H)
1214 C	OM 364 LA Turboalim. POT	98	1° FR-1140 2° FR-987	FA-691	FTC-17191	FA-208H (H)
1214 R	OM 366 AtURBO		1° FR-966 2° FR-987		FTC-17191	

MERCEDES BENZ (Camiones y Buses)

Modelo	Motor	Año	Aire Primario Aire Secundario	Aceite	Combustible	Hidráulico
1214, 1214 K, L, 1214, 1414, 1414 K, L, 1414, 1714	OM 366		1° FR-966 2° FR-987		FTC-17191	FA-208H (H)
1215 CiTy Elec.	OM 904 LA	98	1° FSR-8043 2° FSR-8045	FA-698		FA-208H (H) FCS-222 (TC)
1218, L 1218, 1418, 1418 K, L 1418 E	OM 366 A		1° FR-966 2° FR-987			FA-208H (H)
1418- L 1418- 1418 K fronTal	OM 366 A Turboalimentado		1° FR-966 2° FR-987		FC-707	FA-208H (H)
1517- 1618 Turbo		76	1° FR-966 2° FR-987		FC-707	
1614, 1722			1° FR-966 2° FR-987	F-166	FC-707	
1618 M	OM 904 LA	98	1° FSR-8043 2° FSR-8045	FA-698		FA-208H (H) FCS-222 (TC)
1620, 1920	OM 366 LA		1° FR-966 2° FR-987		FC-707	FA-208H (H)
1622 L (6X2)	OM 924 LA	01	1° FSR-8048 2° FSR-8046	FA-698		FA-208H (H) FCS-222 (TC)
1633	OM 449 ALA		1° FR-865 2° FR-1006	FA-633		FA-208H (H)
1634 LS	OM 447 LA II	01/00	FSR-8114	FA-632		FA-208H (H)
1638 (MB 0374 Chasis)	OM 447		1° FR-920 2° FR-1141	FA-632		FA-208H (H)
1644,1844,1944,2044, 2244,2544,2644,3244	OM 442 LA	06/93		FA-632		FA-208H (H)
1718 M Turbo Intercooler 4.3	OM 904 LA	04	1° FSR-8043 2° FSR-8045 FR-1232	FA-698		FA-208H (H)
1728 Elec.	DC OM 906 LA	04	FR-1232			FA-208H (H)
180 D (Van- Furgon-Combi)	OM 616 963 II/Diesel		FR-1153	FA-694	FCS-165	
1840, 1940, 2540	OM 402/442 LA	07/91				FA-208H (H)

MERCEDES BENZ (Camiones y Buses)

Modelo	Motor	Año	Aire Primario Aire Secundario	Aceite	Combustible	Hidráulico
1938 L- LS Elec.	OM 457	98	1° FR-920 2° FR-1141	F-166		FA-208H (H)
1938 S Elec.		99	FSR-8114		FCS-222	FA-208H (H)
1944	OM 457 LA Turbocooler	01/01	FSR-8114		FCS-222	FA-208H (H)
2318 L- LB	OM 366 A/ LA	96	FR-1232	F-166	FTC-17191	FA-208H (H)
2418	OM 366 A/ LA	96	FR-1232	F-166	FTC-17191	FA-208H (H)
2423 B-K	OM 906 LA	98	FR-1232			FA-208H (H) FCS-222 (TC)
2638 LS- L	OM 457 LA	98	1° FR-920 2° FR-1141	FA-632		FCS-222 (TC) FA-208H (H)
709	OM 364		1° FR-861 2° FR-985	FA-691 ó F-166	FC-707	
710			FR-1213	F-166	FC-707	
710		04	1° FR-966 2° FR-987	F-166	FC-707	FCS-222 (TC)
710 - LN 914	OM 364 LA	98	1° FR-1140 2° FR-987	FA-691 ó F-166	FC-707	FA-208H (H)
712 C- 914 C Elec.	OM 904 L/LA	98	1° FSR-8043 2° FSR-8045	FA-698		FA-208H (H) FCS-222 (TC)
809 (LK 673)	OM 364.907	de11/83a02/93	FR-1217	FA-691	FC-707	FA-208H (H)
814	OM 364 LA Turbocooler	98	1° FR-1140 2° FR-987	FA-691	FC-707	FA-208H (H)
814 (LK 674)	OM 356.901	02/92	FR-1217	FA-691	FC-707	FA-208H (H)
814 (LK 674)	OM 366.905/6/7	de03/84a02/93	FR-1217	FA-691	FC-707	FA-208H (H)
914 (LK 674)	OM 356.901	de03/84a02/93	FR-1217	FA-691	FC-707	FA-208H (H)

MERCEDES BENZ (Camiones y Buses)

Modelo	Motor	Año	Aire Primario Aire Secundario	Aceite	Combustible	Hidráulico
914 (LK 674)	OM 366.905/7	de03/84a02/93	FR-1217	FA-691	FC-707	FA-208H (H)
914 C Elec.	OM 904 LA	01/98	1° FSR-8043 2° FSR-8045	FA-698		FA-208H (H) FCS-222 (TC)
A 1718 4X4	OM 366 A Turbo		1° FR-966 2° FR-987		FTC-17191	FA-208H (H)
K 1214	OM 366 A/LA	96	FR-1232	F-166	FTC-17191	FA-208H (H)
K 1718	OM 366 A/ LA	96	FR-1232	F-166	FTC-17191	FA-208H (H)
KO 914 (LK 674.090)	OM 366.940	de01/87a02/93	FR-1217	FA-691	FC-707	FA-208 (H)
L 1114- LO 1114- 1514- OF 1214- OH 1314		84	1° FR-966 2° FR-987		FC-707	FA-208H (H)
L 1218	OM 366 A / LA	96	FR-1232	F-166	FTC-17191	FA-208H (H)
L 1218 Elec.	OM 904 LA	98	1° FSR-8048 2° FSR-8046	FA-698		FCS-222 (TC)
L 1518- O 170- OH 1318- OH 1418		11/83	FR-966		FC-707	
L 1521- OH 1419- OH 1517			1° FR-966 2° FR-987	FA-55		FA-208H (H)
L 1619, L-LS 1622	OM 366, 366A		1° FR-966 2° FR-987		FC-707	
L 1620, LK 1620, 1720, 1720K, 1723	OM 366 LA Turbocooler	11/97	FR-1232	F-166	FCS-42	FA-208H (H) FTC-17191 (TC)
L 1621 (Bus chasis VMO 390)	OM 366 LA Turbocooler	11/97	1° FR-865 2° FR-1006	F-166	FCS-42	FA-208H (H)
L 1623 Elec.	OM 906 L/LA	98	1° FSR-8048 2° FSR-8046			FA-208H (H) FCS-222 (TC)
L 1718 6X2	OM 366 A		1° FR-966 2° FR-987		FC-707 ó FTC-17191	FA-208H (H)
L 1723 Elec.	OM 906 L/ LA	98	1° FSR-8048 2° FSR-8046			FA-208H (H) FCS-222 (TC)

MERCEDES BENZ (Camiones y Buses)

Modelo	Motor	Año	Aire Primario Aire Secundario	Aceite	Combustible	Hidráulico
L 608 D- STP- LD 608			FR-1074	FA-689	FC-707	
L 710- D- L 910- 810	OM 364		FR-861	FA-691	FC-707	
L 914- 1214 (liviano)	OM 364 LA Turbocooler		1° FR-862 2° FR-986	FA-691 ó F-166		FA-208H (H)
L- LA- LAK- K 1418	OM 366 A/LA	96	FR-1232	F-166	FTC-17191	FA-208H (H)
L- LB- LK 2325 (6X4)	OM 449 A Turboalimentado		1° FR-865 2° FR-1006	FA-633		FA-208H (H)
L- LK 1215- LA 1419- L-LK 1615	OM 366, 366A		1° FR-862 2° FR-986		FC-707	
L- LK 1418 R	OM 366 A Turboalimentado	98	1° FR-966 2° FR-987	F-166		FA-208H (H)
L- LK- LS 2635 6X4	OM 447 LA Turbocooler		1° FR-920 2° FR-1141	FA-632		FA-208H (H)
L- LS 1623			FR-1232	F-166	FCS-226	
L- LS 1632	OM 449 LA	99	1° FR-865 2° FR-1006	FA-633		FA-208H (H)
L- LS 1633, LS 1625, LS 1630	OM 449 LA Turbocooler		1° FR-865 2° FR-1006	FA-633		FA-208H (H)
L- LS 1938	OM 447 LA		1° FR-920 2° FR-1141	FA-632		FA-208H (H)
L/LK 1620, L 1621, LK 1621, 1721, 1721S	OM 366 LA Turbocooler		1° FR-865 2° FR-1006		FCS-42	FA-208H (H)
L1618, LK1618, 1718, 1718A 1718K, L 2318, LB/			1° FR-966 2° FR-987	F-166		FA-208H (H)
LA 1418 (4X4), LAK 1418 (4X4)	OM 366 A Turboalimentado		1° FR-966 2° FR-987			FA-208H (H)
LO 813 D- L 913 D	OM 364 A		FR-862	FA-691	FC-707	
LO 814	OM 364 LA	98	1° FR-1140 2° FR-987	FA-691	FC-707	FA-208H (H)

MERCEDES BENZ (Camiones y Buses)

Modelo	Motor	Año	Aire Primario Aire Secundario	Aceite	Combustible	Hidráulico
LO 814 (LK 674)	OM 356	02/92	FR-1217	FA-691	FC-707	FA-208H (H)
LO 814 (LK 674)	OM 366.932	de12/86a02/93	FR-1217	FA-691	FC-707	FA-208H (H)
LS 1526- OH 1526			FR-962	FA-55		
LS 1935, L- LS 1941	OM 447 LA Turbocooler		1° FR-920 2° FR-1141	FA-632		FA-208H (H)
OF 1114	1114		FR-966	FA-7152	FC-707	
OF 1115 L- SB	OM 904 LA turboalimentado postenfriado	00	1° FSR-8043 2° FSR-8045	FA-698		FCS-222 (TC)
OF 1315- OH 1315	OM 366		1° FR-966 2° FR-987		FC-707	FA-208H (H)
OF 1417 Elec.	OM 904 L/ LA	98	1° FSR-8043 2° FSR-8045	FA-698		FCS-222 (TC)
OF 1721	OM 366 LA	98	1° FSR-8048 2° FSR-8046	F-166	FTC-17191	
OF 1721 Elec.	OM 906 LA	98	1° FSR-8048 2° FSR-8046			FA-208H (H) FCS-222 (TC)
OH 1318	OM 366	97	1° FR-966 2° FR-987		FC-707	FA-208H (H)
OH 1420	OM 366 LA	98	1° FR-865 2° FR-1006	F-166		FA-208H (H)
OH 1421 L		98	1° FSR-8048 2° FSR-8046	F-166	FTC-17191	
OH 1621 L- LE	OM 366 LA	97	1° FR-865 2° FR-1006	F-166	FTC-17191	FA-208H (H)
OH 1623 LG	M 366 LAG	98	1° FR-865 2° FR-1006	F-166	FTC-17191	
OH 1628 L	OM 449 LA	98	1° FR-920 2° FR-1141	FA-633		
OH 1721 L SB			1° FR-865 2° FR-1006	F-166	FCS-42	

MERCEDES BENZ (Camiones y Buses)

Modelo	Motor	Año	Aire Primario Aire Secundario	Aceite	Combustible	Hidráulico
OHL 1320- 1420	OM 366 A		1° FR-966 2° FR-987	F-166	FC-707	FA-208H (H)
S 1721	OM 366 A/ LA	96	FR-1232	F-166	FTC-17191	FA-208H (H)
SprinTer 311 CDI	OM 611 DELA 2.2 Turbo postenfriado	04/00	FR-1214			
SprinTer 313 CDI	OM 611 DELA 2.2 Turbo postenfriado	04/00	FR-1214			
SprinTer 413 CDI	OM 611 DELA 2.2 Turbo postenfriado	04/00	FR-1214			
SprinTer CDI	OM 611 983	02	FR-1214			
Kerax 420 dCi	DCI 11-420 Common-Rail	11/01	1° FSR-8038 2° FSR-8083	F-12028		FA-208H (H)
Magnum AE 420			1° FR-900 2° FR-849	F-12028	FCS-15050	FA-208H (H)
Magnum E Tech 440 19	BT 4X2 Z1	02/00	1° FSR-8072 2° FSR-8081	F-12028		FA-208H (H)
Manager G 300			1° FR-900 2° FR-849	F-12028	FCS-15050	FA-208H (H)
Midliner M 210	MIDR 06.02.26 W	de05/92a05/00	1° FR-962 2° FR-868 ó 1° FR-835 2° FR-849	F-12028	FCS-15050	FA-208H (H)
Midliner M 230	MIDR 06.02.26	de06/89a05/00	1° FR-962 2° FR-868 ó 1° FR-835 2° FR-849	F-12028	FCS-15050	FA-208H (H)
Midliner ME 160	MIDS 06.02.12 B	de01/90a05/00	1° FR-962 2° FR-868 ó 1° FR-835 2° FR-849	F-12028	FCS-15050	FA-208H (H)
Midliner MS 230				F-12040		
Midlum 270.18 dCi	DCi 6-270	11/01	1° FSR-8072 2° FSR-8081	F-12028		FA-208H (H)
Premium HR 340.19 T	MIDR 06.20.45		1° FSR-8038 2° FSR-8083	F-12028	FCS-15050	FA-208H (H)

RENAULT

Modelo	Motor	Año	Aire Primario Aire Secundario	Aceite	Combustible	Hidráulico
Premium HR 385 24 T-HR 385 19 T	MIDR 06.23.56		1° FSR-8038 2° FSR-8083	F-12028	FCS-15050	FA-208H (H)
Premium HR 420 dCi	dCi 11 B/43	05/00	1° FSR-8072 2° FSR-8081	F-12028		FA-208H (H)
Premium Lander HL 420 dCi	dCi 11B/43	02/04	1° FSR-8072 2° FSR-8081	F-12028		FA-208H (H)
P 93 H	DS 9 Turbocooler	01/95	1° FR-1080 2° FR-1141	F-52	FCS-15050 (2)	
R 113	DSC 11	01/86	1° FR-1080 2° FR-1141	F-52	FCS-15050 (2)	FA-208H (H) FC-759 (TC) F-182N (T)
R 113	DSC 14	01/86	1° FR-1080 2° FR-1141	F-52	FCS-15050 (2)	FA-208H (H) FC-759 (TC) F-182N (T)
R 143 H	DSC 11	de01/86	1° FR-1080 2° FR-1141	F-52	FCS-15050 (2)	FA-208H (H) FC-759 (TC) F-182N (T)
R 143 H	DSC 14	de01/86	1° FR-1080 2° FR-1141	F-52	FCS-15050 (2)	FA-208H (H) FC-759 (TC) F-182N (T)
T 113	DSC 11	01/86	1° FR-1080 2° FR-1141	F-52	FCS-15050 (2)	FA-208H (H) FC-759 (TC) F-182N (T)
T 113	DSC 14	01/86	1° FR-1080 2° FR-1141	F-52	FCS-15050 (2)	FA-208H (H) FC-759 (TC) F-182N (T)
T 113 HK	DS 11, 6X6	01/86	1° FR-1080 2° FR-1141	F-52	FCS-15050 (2)	FA-208H (H) FC-759 (TC) F-182N (T)
T 143 H	DSC 14	01/86	1° FR-1080 2° FR-1141	F-52	FCS-15050 (2)	FA-208H (H) FC-759 (TC) F-182N (T)
T 143 H	DSC 11	01/86	1° FR-1080 2° FR-1141	F-52	FCS-15050 (2)	FA-208H (H) FC-759 (TC) F-182N (T)
P 114	DC11-75/9	01/98	1° FSR-8014 2° FSR-8016		FCS-181	FA-208H (H) F-182N (T)
P 114	DC12-12/02T	01/98	1° FSR-8014 2° FSR-8016		FCS-181	FA-208H (H) F-182N (T)
P 114 (Canavieiros)	DC 11-75/9	01/98			FCS-181	FA-208H (H) F-182N (T)
P 114 (Canavieiros)	DC 12-12/02T	01/98			FCS-181	FA-208H (H) F-182N (T)

SCANIA BRASIL (serie 4)

Modelo	Motor	Año	Aire Primario Aire Secundario	Aceite	Combustible	Hidráulico
P 124	DS12, Electrónica POT 420	03/99	1° FSR-8014 2° FSR-8016		FCS-181	FA-208H (H) F-182N (T)
P 124	DSC11-75/9	01/98	1° FSR-8014 2° FSR-8016		FCS-181	FA-208H (H) F-182N (T)
P 124	DSC12-12/02T	01/98	1° FSR-8014 2° FSR-8016		FCS-181	FA-208H (H) F-182N (T)
P 124 (Canavieiros)	DC11-75/9	01/98			FCS-181	FA-208H (H) F-182N(T)
P 124 (Canavieiros)	DC12-12/02T	01/98			FCS-181	FA-208H (H) F-182N (T)
P 124 (Canavieiros)	DS12, Electrónica POT 420	03/99			FCS-181	FA-208H (H) F-182N (T)
P 94	DSC11-75	01/98	1° FSR-8014 2° FSR-8016		FCS-181	FA-208H (H) F-182N (T)
P 94	DSC9-12	01/98	1° FR-8014 2° FR-8016		FCS-181	FA-208H (H) F-182N (T)
P 94 (Canavieiros)	DCS11-75	01/98			FCS-181	FA-208H (H) F-182N (T)
P 94 (Canavieiros)	DSC9-12	01/98			FCS-181	FA-208H (H) F-182N (T)
R 114	DC11-75/9	01/98	1° FSR-8014 2° FSR-8016		FCS-181	FA-208H (H) F-182N (T)
R 114	DC12-12/02T	01/98	1° FSR-8014 2° FSR-8016		FCS-181	FA-208H (H) F-182N (T)
R 114 (Canavieiros)	DC 11-75/9	01/98			FCS-181	FA-208H (H) F-182N (T)
R 114 (Canavieiros)	DC 12-12/02T	01/98			FCS-181	FA-208H (H) F-182N (T)
R 124	DS12, Electrónica POT 420	03/99	1° FSR-8014 2° FSR-8016		FCS-181	FA-208H (H) F-182N (T)
R 124	DSC11-75/9	01/98	1° FSR-8014 2° FSR-8016		FCS-181	FA-208H (H) F-182N (T)
R 124	DSC12-01, Electrónica POT 400	01/01	1° FSR-8014 2° FSR-8016		FCS-181	FA-208H (H) F-182N (T)

SCANIA BRASIL (serie 4)

Modelo	Motor	Año	Aire Primario Aire Secundario	Aceite	Combustible	Hidráulico
R 124	DSC12-12/02T	01/98	1° FSR-8014 2° FSR-8016		FCS-181	FA-208H (H) F-182N (T)
R 124 (Canavieiros)	DC11-75/9	01/98			FCS-181	FA-208H (H) F-182N (T)
R 124 (Canavieiros)	DC12-12/02T	01/98			FCS-181	FA-208H (H) F-182N (T)
R 124 (Canavieiros)	DS12, Electrónica POT 420	03/99			FCS-181	FA-208H (H) F-182N (T)
T 114	DC11-75/9	01/98	1° FSR-8014 2° FSR-8016		FCS-181	FA-208H (H) F-182N (T)
T 114	DC12-12/02T	01/98	1° FSR-8014 2° FSR-8016		FCS-181	FA-208H (H) F-182N (T)
T 114 (Canavieiros)	DC11-75/9	01/98			FCS-181	FA-208H (H) F-182N (T)
T 114 (Canavieiros)	DC12-12/02T	01/98			FCS-181	FA-208H (H) F-182N (T)
T 124	DS12, Electrónica POT 420	03/99	1° FSR-8014 2° FSR-8016		FCS-181	FA-208H (H) F-182N (T)
T 124	DSC11-75/9	01/98	1° FSR-8014 2° FSR-8016		FCS-181	FA-208H (H) F-182N (T)
T 124	DSC12-01, POT 400 Electrónica	01/01	1° FSR-8014 2° FSR-8016		FCS-181	FA-208H (H) F-182N (T)
T 124	DSC12-12/02T	01/98	1° FSR-8014 2° FSR-8016		FCS-181	FA-208H (H) F-182N (T)
T 124 (Canavieiros)	DC11-75/9	01/98			FCS-181	FA-208H (H) F-182N (T)
T 124 (Canavieiros)	DC12-12/02T	01/98			FCS-181	FA-208H (H) F-182N (T)
T 124 (Canavieiros)	DS12, POT 420 Electrónica	03/99			FCS-181	FA-208H (H) F-182N (T)
G 93	DN 9	de03/88a01/91	1° FR-1164 2° FR-1216 ó 1° FR-1474 2° FR-1475	F-52	FCS-15050 (2)	FA-208H (H) FCS-162 (TC)

SCANIA EUROPEO (serie 3)

Modelo	Motor	Año	Aire Primario Aire Secundario	Aceite	Combustible	Hidráulico
G 93	DS 9	de03/88a01/91	1° FR-1164 2° FR-1216 ó 1° FR-1474 2° FR-1475	F-52	FCS-15050 (2)	FA-208H (H) FCS-162 (TC)
G 93	DSC 9	de03/88a01/91	1° FR-1164 2° FR-1216 ó 1° FR-1474 2° FR-1475	F-52	FCS-15050 (2)	FA-208H (H) FCS-162 (TC)
P 113	DS 11 POT 343	de06/88a02/95	1° FR-1164 2° FR-1216	F-52	FCS-15050 (2)	FA-208H (H) FCS-162 (TC)
P 113	DS 11 POT 343	de03/95a06/97	1° FR-1474 2° FR-1475	F-52	FCS-15050 (2)	FA-208H (H) FCS-162 (TC)
P 113	DSC 11 POT 343	de06/88a02/95	1° FR-1164 2° FR-1216	F-52	FCS-15050 (2)	FA-208H (H) FCS-162 (TC)
P 113	DSC 11 POT 343	de03/95a06/97	1° FR-1474 2° FR-1475	F-52	FCS-15050 (2)	FA-208H (H) FCS-162 (TC)
P 113	DTC 11 POT 343	de06/88a02/95	1° FR-1164 2° FR-1216	F-52	FCS-15050 (2)	FA-208H (H) FCS-162 (TC)
P 113	DTC 11 POT 343	de03/95a06/97	1° FR-1474 2° FR-1475	F-52	FCS-15050 (2)	FA-208H (H) FCS-162 (TC)
P 93	DS 9	de03/88a01/91	1° FR-1164 2° FR-1216 ó 1° FR-1474 2° FR-1475	F-52	FCS-15050 (2)	FA-208H (H) FCS-162 (TC)
P 93	DSC 9	de03/88a01/91	1° FR-1164 2° FR-1216 ó 1° FR-1474 2° FR-1475	F-52	FCS-15050 (2)	FA-208H (H) FCS-162 (TC)
R 113	DS 11	de06/88a02/95	1° FR-1164 2° FR-1216	F-52	FCS-15050 (2)	FA-208H (H) FCS-162 (TC)
R 113	DS 11 POT 343	de03/95a06/97	1° FR-1474 2° FR-1475	F-52	FCS-15050 (2)	FA-208H (H) FCS-162 (TC)
R 113	DSC 11 POT 343	de06/88a02/95	1° FR-1164 2° FR-1216	F-52	FCS-15050 (2)	FA-208H (H) FCS-162 (TC)
R 113	DSC 11 POT 343	de03/95a06/97	1° FR-1474 2° FR-1475	F-52	FCS-15050 (2)	FA-208H (H) FCS-162 (TC)
R 113	DTC 11 POT 343	de03/95a06/97	1° FR-1474 2° FR-1475	F-52	FCS-15050 (2)	FA-208H (H) FCS-162 (TC)

SCANIA EUROPEO (serie 3)

Modelo	Motor	Año	Aire Primario		Aceite	Combustible	Hidráulico
			Aire Secundario				
R 113	DTC 11 POT 343	de06/88a02/95	1° FR-1164 2° FR-1216		F-52	FCS-15050 (2)	FA-208H (H) FCS-162 (TC)
R 143	DSC 14	de05/88a12/96	1° FR-1164 2° FR-1216		F-52	FCS-15050 (2)	FA-208H (H) FCS-162 (TC) F-182N (T)
R 93	DS 9	de03/88a01/91	1° FR-1164 2° FR-1216 ó 1° FR-1474 2° FR-1475		F-52	FCS-15050 (2)	FA-208H (H) FCS-162 (TC)
R 93	DSC 9	de03/88a01/91	1° FR-1164 2° FR-1216 ó 1° FR-1474 2° FR-1475		F-52	FCS-15050 (2)	FA-208H (H) FCS-162 (TC)
T 113	DN 11 POT 343	de05/88a06/97	1° FR-1164 2° FR-1216 ó 1° FR-1474 2° FR-1475		F-52	FCS-15050 (2)	FA-208H (H) FCS-162 (TC)
T 113	DS 11 POT 343	de05/88a06/97	1° FR-1164 2° FR-1216 ó 1° FR-1474 2° FR-1475		F-52	FCS-15050 (2)	FA-208H (H) FCS-162 (TC)
T 113	DSC 11 POT 343	de05/88a06/97	1° FR-1164 2° FR-1216 ó 1° FR-1474 2° FR-1475		F-52	FCS-15050 (2)	FA-208H (H) FCS-162 (TC)
T 143	DSC 14	de05/88a12/96	1° FR-1164 2° FR-1216		F-52	FCS-15050 (2)	FA-208H (H) FCS-162 (TC) F-182N (T)
T 93	DN 9	de03/88a01/91	1° FR-1164 2° FR-1216 ó 1° FR-1474 2° FR-1475		F-52	FCS-15050 (2)	FA-208H (H) FCS-162 (TC) F-182N (T)
T 93	DS 9	de03/88a01/91	1° FR-1164 2° FR-1216 ó 1° FR-1474 2° FR-1475		F-52	FCS-15050 (2)	FA-208H (H) FCS-162 (TC) F-182N (T)
T 93	DSC 9	de03/88a01/91	1° FR-1164 2° FR-1216 ó 1° FR-1474 2° FR-1475		F-52	FCS-15050 (2)	FA-208H (H) FCS-162 (TC) F-182N (T)
P 114	DC11 (Euro 3) Carc. Donaldson	03/99	FSR-8010		F-12026	FCS-181	FA-208H (H) F-182N (T)
P 114	DC11 (Euro 3) Carc. Knecht-Mahle	03/99	FSR-8120		F-12026	FCS-181	FA-208H (H) F-182N (T)

SCANIA EUROPEO (serie 4)

Modelo	Motor	Año	Aire Primario Aire Secundario	Aceite	Combustible	Hidráulico
P 114	DSC11 (Euro 2) POT 343 Carc. Donaldson	10/96	FSR-8010	F-12026	FCS-181	FA-208H (H) F-182N (T)
P 114	DSC11 (Euro 2) POT 343 Carc. Knecht-Mahle	10/96	FSR-8120	F-12026	FCS-181	FA-208H (H) F-182N (T)
P 124	DC12 (Euro 3) Carc. Donaldson	03/99	FSR-8010	F-12026	FCS-181	FA-208H (H) F-182N (T)
P 124	DC12 (Euro 3) Carc. Knecht-Mahle	03/99	FSR-8120	F-12026	FCS-181	FA-208H (H) F-182N (T)
P 124	DC1202/08 (Euro 3) POT 469 Carc. Donaldson	02/01	FSR-8010	F-12026	FCS-181	FA-208H (H) F-182N (T)
P 124	DC1202/08 (Euro 3) POT 469 Carc. Knecht-Mahle	02/01	FSR-8120	F-12026	FCS-181	FA-208H (H) F-182N (T)
P 124	DC1203 (Euro 3-1) POT 420 Carc. Donaldson	10/02	FSR-8010	F-12026	FCS-181	FA-208H (H) F-182N (T)
P 124	DC1203 (Euro 3-1) POT 420 Carc. Knecht-Mahle	10/02	FSR-8120	F-12026	FCS-181	FA-208H (H) F-182N (T)
P 124	DSC12 (Euro 2) POT 360 Carc. Donaldson	01/96	FSR-8010	F-12026	FCS-181	FA-208H (H) F-182N (T)
P 124	DSC12 (Euro 2) POT 360 Carc. Knecht-Mahle	01/96	FSR-8120	F-12026	FCS-181	FA-208H (H) F-182N (T)
P 94	DC9 (Euro 3) Carc. Donaldson	03/99	FSR-8010	F-12026	FCS-181	FA-208H (H) F-182N (T)
P 94	DC9 (Euro 3) Carc. Knecht-Mahle	03/99	FSR-8120	F-12026	FCS-181	FA-208H (H) F-182N (T)
P 94	DSC9 (Euro 2) POT 227 Carc. Knecht-Mahle	10/95	FSR-8120	F-12026	FCS-181	FA-208H (H) F-182N (T)
P 94 - PoT. 227	DSC9 (Euro 2) Carc. Donaldson	10/95	FSR-8010	F-12026	FCS-181	FA-208H (H) F-182N (T)
R 114	DC11 (Euro 3) Carc. Donaldson	03/99	FSR-8010	F-12026	FCS-181	FA-208H (H) F-182N (T)
R 114	DC11 (Euro 3) Carc. Knecht-Mahle	03/99	FSR-8120	F-12026	FCS-181	FA-208H (H) F-182N (T)
R 114 - PoT. 343	DSC11 (Euro 2) Carc. Donaldson	10/96	FSR-8010	F-12026	FCS-181	FA-208H (H) F-182N (T)

SCANIA EUROPEO (serie 4)

Modelo	Motor	Año	Aire Primario Aire Secundario	Aceite	Combustible	Hidráulico
R 114 - PoT. 343	DSC11 (Euro 2) Carc. Knecht-Mahle	10/96	FSR-8120	F-12026	FCS-181	FA-208H (H) F-182N (T)
R 124		02/01	FSR-8120	F-12026	FCS-181	FA-208H (H) F-182N (T)
R 124	D12 (Euro 3) Carc. Donaldson	03/99	FSR-8010	F-12026	FCS-181	FA-208H (H) F-182N (T)
R 124	D12 (Euro 3) Carc. Knecht-Mahle	03/99	FSR-8120	F-12026	FCS-181	FA-208H (H) F-182N (T)
R 124	DSC12 (Euro 2) Carc. Donaldson	11/95	FSR-8010	F-12026	FCS-181	FA-208H (H) F-182N (T)
R 124	DSC12 (Euro 2) Carc. Knecht-Mahle	11/95	FSR-8120	F-12026	FCS-181	FA-208H (H) F-182N (T)
R 124	DT1203 (Euro 3-1) Carc. Knecht-Mahle	10/02	FSR-8120	F-12026	FCS-181	FA-208H (H) F-182N (T)
R 124 - PoT. 469	DT1202/08 (Euro 3) Carc. Donaldson	02/01	FSR-8010	F-12026	FCS-181	FA-208H (H) F-182N (T)
R 144	DSC 14 (Euro 2) Carc. Donaldson	de11/95a12/01	FSR-8008	F-12026	FCS-181	FA-208H (H) F-182N (T)
R 144	DSC14 (Euro 2) Carc. Knecht-Mahle	de11/95a12/01		F-12026	FCS-181	FA-208H (H) F-182N (T)
R 164	DC16-01 V8 POT 580 Carc. Donaldson	06/00	FSR-8008			FA-208H (H) F-182N (T)
R 164	DC16-01 V8 POT 580 Carc. Knecht-Mahle	06/00				FA-208H (H) F-182N (T)
R 164	DC16-02 V8 POT 480 Carc. Donaldson	06/00	FSR-8008			FA-208H (H) F-182N (T)
R 164	DC16-02 V8 POT 480 Carc. Knecht-Mahle	06/00				FA-208H (H) F-182N (T)
R 94	DC9 (Euro 3) Carc. Donaldson POT 227	10/95	FSR-8010	F-12026	FCS-181	FA-208H (H) F-182N (T)
R 94	DSC9 (Euro 2) POT 227 Carc. Donaldson	10/95	FSR-8010	F-12026	FCS-181	FA-208H (H) F-182N (T)
R 94	DSC9 (Euro 2) POT 227 Carc. Knecht-Mahle	10/95	FSR-8120	F-12026	FCS-181	FA-208H (H) F-182N (T)

SCANIA EUROPEO (serie 4)

Modelo	Motor	Año	Aire Primario Aire Secundario	Aceite	Combustible	Hidráulico
R 94 - PoT. 227	DC9 (Euro 3) Carc. Knecht-Mahle	10/95	FSR-8120	F-12026	FCS-181	FA-208H (H) F-182N (T)
R-124 - PoT. 420	DT1203 (Euro 3-1) Carc. Donaldson	10/02	FSR-8010	F-12026	FCS-181	FA-208H (H) F-182N (T)
T 114	DC11 (Euro 3) Carc. Donaldson	03/98	FSR-8010	F-12026	FCS-181	FA-208H (H) F-182N (T)
T 114	DC11 (Euro 3) Carc. Knecht-Mahle	03/98	FSR-8120	F-12026	FCS-181	FA-208H (H) F-182N (T)
T 124	D12 (Euro 3) Carc. Donaldson	03/99	FSR-8010	F-12026	FCS-181	FA-208H (H) F-182N (T)
T 124	D12 (Euro 3) Carc. Knecht-Mahle	03/99	FSR-8120	F-12026	FCS-181	FA-208H (H) F-182N (T)
T 124	DSC12 (Euro 2) Carc. Knecht-Mahle	11/95	FSR-8120	F-12026	FCS-181	FA-208H (H) F-182N (T)
T 124	DSC12 (Euro 2) Carc. Donaldson	11/95	FSR-8010	F-12026	FCS-181	FA-208H (H) F-182N (T)
T 124	DT1202/08 (Euro 3) POT 469 Carc. Donaldson	02/01	FSR-8010	F-12026	FCS-181	FA-208H (H) F-182N (T)
T 124	DT1202/08 (Euro 3) POT 469 Carc. Knecht-Mahle	02/01	FSR-8120	F-12026	FCS-181	FA-208H (H) F-182N (T)
T 124	DT1203 (Euro 3-1) POT 420 Carc. Donaldson	10/02	FSR-8010	F-12026	FCS-181	FA-208H (H) F-182N (T)
T 124	DT1203 (Euro 3-1) POT 420 Carc. Knecht-Mahle	10/02	FSR-8120	F-12026	FCS-181	FA-208H (H) F-182N (T)
T 144	DSC14 (Euro 2) POT 460 Carc. Donaldson	de11/95a12/01	FSR-8008	F-12026	FCS-181	FA-208H (H) F-182N (T)
T 144	DSC14 (Euro 2) POT 460 Carc. Knecht-Mahle	de11/95a12/01		F-12026	FCS-181	FA-208H (H) F-182N (T)
T 164	DC16-01 V8 POT 580 Carc. Donaldson	06/00	FSR-8008			FA-208H (H) F-182N (T)
T 164	DC16-01 V8 POT 580 Carc. Knecht-Mahle	06/00				FA-208H (H) F-182N (T)
T 164	DC16-02 V8 POT 480 Carc. Donaldson	06/00	FSR-8008			FA-208H (H) F-182N (T)

SCANIA EUROPEO (serie 4)

Modelo	Motor	Año	Aire Primario Aire Secundario	Aceite	Combustible	Hidráulico
T 164	DC16-02 V8 POT 480 Carc. Knecht-Mahle	06/00				FA-208H (H) F-182N (T)
T 94	DC9 (Euro 3) Carc. Donaldson	03/99	FSR-8010	F-12026	FCS-181	FA-208H (H) F-182N (T)
T 94	DC9 (Euro 3) Carc. Knecht-Mahle	03/99	FSR-8120	F-12026	FCS-181	FA-208H (H) F-182N (T)
T 94	DSC9 (Euro 2) POT 227 Carc. Donaldson	10/96	FSR-8010	F-12026	FCS-181	FA-208H (H) F-182N (T)
T 94 - Pot. 227	DSC9 (Euro 2) Carc. Knecht-Mahle	10/96	FSR-8120	F-12026	FCS-181	FA-208H (H) F-182N (T)
13.180 Turbocooler	MWM 6.10 TCA	04	1° FSR-8112 2° FSR-8119	F-37	FTC-17191	FA-208H (H)
17.160/16.170BT	CUMM 6BTAA	98	1° FR-1230 2° FR-1231	F-164	FCS-15050	FA-208H (H)
18.310	CUMM 6CTAA	11/03	1° FSR-8112 2° FSR-8119	F-230		FA-208H (H)
26.260/24.220-24.250 (6x4)	CUMM 6CTAA	98	1° FR-1203 2° FR-1233	F-230	FTC-17191	FA-208H (H)
15.160/14.170 BT	CUMM 6BTAA	98	1° FR-1230 2° FR-1231	F-164	FCS-15050	FA-208H (H)
17.210 OD T.	MWM 6.10 TCA	09/01	1° FSR-8112 2° FSR-8119	F-37	FTC-17191	FA-208H (H)
17.210 T	MWM 6.10 TCA	09/01	1° FSR-8112 2° FSR-8119	F-37	FTC-17191	FA-208H (H)
17.220/16.220	CUMM 6CTAA	98	1° FR-1203 2° FR-1233	F-230	FTC-17191	FA-208H (H)
17.240 OT T.	MWM 6.10 TCA	09/01	1° FSR-8112 2° FSR-8119	F-37		FA-208H (H)
17.300 T.	CUMM 6CTAA	01	1° FSR-8112 2° FSR-8119	F-230	FCS-15050	FA-208H (H)
17.300/16.300/15.300	CUMM 6CTAA	98	1° FR-1232 2° FR-1233	F-230	FTC-17191	FA-208H (H)
8.140	MWM 4.10 T Turbo 4.3		1° FR-1140 2° FR-987	F-160EP	FCS-138	FA-208H (H)

VOLKSWAGEN

Modelo	Motor	Año	Aire Primario Aire Secundario	Aceite	Combustible	Hidráulico
9.140/8.140	MWM 4.10 T	98	1° FR-1140 2° FR-987	F-160EP	FCS-138	FA-208H (H)
S.2000 13.170	CUMM 6BTAA	00	1° FR-1230 2° FR-1231		FCS-15050	FA-208H (H)
S.2000 15.160/14.170 BT	CUMM 6BTAA	00	FR-1232	F-164	FCS-15050	FA-208H (H)
S.2000 15.170 T.	CUMM 6BTAA	00	FR-1232	F-164	FCS-15050	FA-208H (H)
S.2000 17.210	CUMM 6BTAA	00	1° FR-1230 2° FR-1231	F-164	FCS-15050	FA-208H (H)
S.2000 17.220T	CUMM 6CTAA	00	FR-1232	F-230	FTC-17191	FA-208H (H)
S.2000 17.300	CUMM 6CTAA	de98a99	FSR-8112		FCS-15050	FA-208H (H)
S.2000 17.300 T.	CUMM 6CTAA	00	FR-1232	F-230	FTC-17191	FA-208H (H)
S.2000 26.260	CUMM 6CTAA	de98a99			FCS-15050	FA-208H (H)
S.2000 26.300 T.	CUMM 6CTAA	00	FR-1232	F-230	FTC-17191	FA-208H (H)
S.2000 26.310	CUMM 6CTAA	01/02	1° FSR-8112 2° FSR-8119	F-230	FCS-15050	FA-208H (H)
S.2000 9.140/8.140	MWM 4.10	00	1° FR-1140 2° FR-987	F-160EP	FCS-138	FA-208H (H)
S.2000 9.150 T	MWM 4.10 TCA	00	1° FR-1140 2° FR-987	F-160EP	FCS-138	FA-208H (H)
B 10 12			1° FR-1158 2° FR-1159	F-12040		FA-208H (H)
B 10M, B 58 Intercooler	THD 101 KC	87	FR-1076	F-12040	FCS-15050	FA-208H (H)
B 12 MoT. TD 123 ES		93	1° FR-1407 2° FR-1408	F-12040	FCS-15050	FA-208H (H) FC-759 (TC)
B 12 R	D12D	03		F-12040		

VOLVO

Modelo	Motor	Año	Aire Primario Aire Secundario	Aceite	Combustible	Hidráulico
Buses V12			1° FR-1407 2° FR-1408	F-12040		FA-208H (H) FC-759 (TC)
FH 12 GlobeTrotter 380 4x2 - 6x4	Tipo D12A Top gun	98		F-12040 F-12027		FA-208H (H)
FH 12-380, FH 12-420, FH 12- 460	D12D-380, D12D-420, D12D-460	11/01		F-12040 F-12027		
FM 12-340, FM 12-380, FM- 420, FM12-460 Turbocooler	D12D-340, D12D-380, D12D-420, D12D-460	11/01		F-12040 F-12027		
N 12 Intercooler	TD 121 F	93	1° FR-1407 2° FR-1408	F-12040	FCS-15050	FA-208H (H) FC-759 (TC)
N10 Turbo Intercooler	T101 F/G	93	1° FR-1407 2° FR-1408	F-12040	FCS-15050	FA-208H (H)
N10H-XH-XHT; N12H-XH-XHT	TD 100A, 101G, 120GA	80	FR-1076	F-12040	FCS-15050	FA-208H (H)
NH 12 140 EDC	Turbo diesel 123 c/inyec.directa	98		F-12040		FA-208H (H)
NH 12 360 EDC Gold	Turbo diesel 123 E/ES c/inyec.e	98		F-12040		FA-208H (H)
NH 12 380 EDC Gold	Turbo diesel 123 E c/inyec. Ele	7/99		F-12040		FA-208H (H)
NH 12 420	D12C 420	7/99		F-12027		
NL 10 (280-340) Intercooler, NL 12 (400)	TD101G, TD102 FS, TD122FS		1° FR-1158 2° FR-1159	F-12040	FCS-15050	FA-208H (H)
NL 10 (320) EDC Gold 4X2 NL12 (360) EDC Gold 6X4 N	D10A, TD 123 , TD123ES			F-12040		FA-208H (H)
Serie N Intercooler	D10A cil. 9.6-TD123ES		1° FR-1158 2° FR-1159	F-12040	FCS-15050	FA-208H (H)
VM 17 206 4X2, VM 17 240 4X2, VM 23 206 6X2, VM 23	MWM 6A	3/04	FSR-8114	F-12040		